

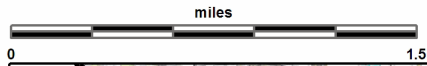
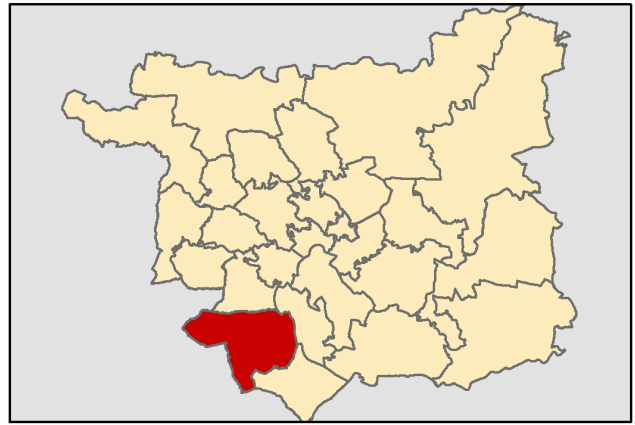
Morley

This report was produced by the Children's Performance Service on 01/06/2012. The information in these overviews are based on the cluster data profile version 5.12.

For more information telephone 0113 39 50701 or email educ.pmi@leeds.gov.uk or visit:

www.leedsinitiative.org/ClusterDataProfile.aspx

The map to the right gives the position of the cluster in Leeds. The map below shows the location of the Children's Centres, Primary and Secondary Schools in the cluster.



Map Key: Morley

3 - Children's Centre/s

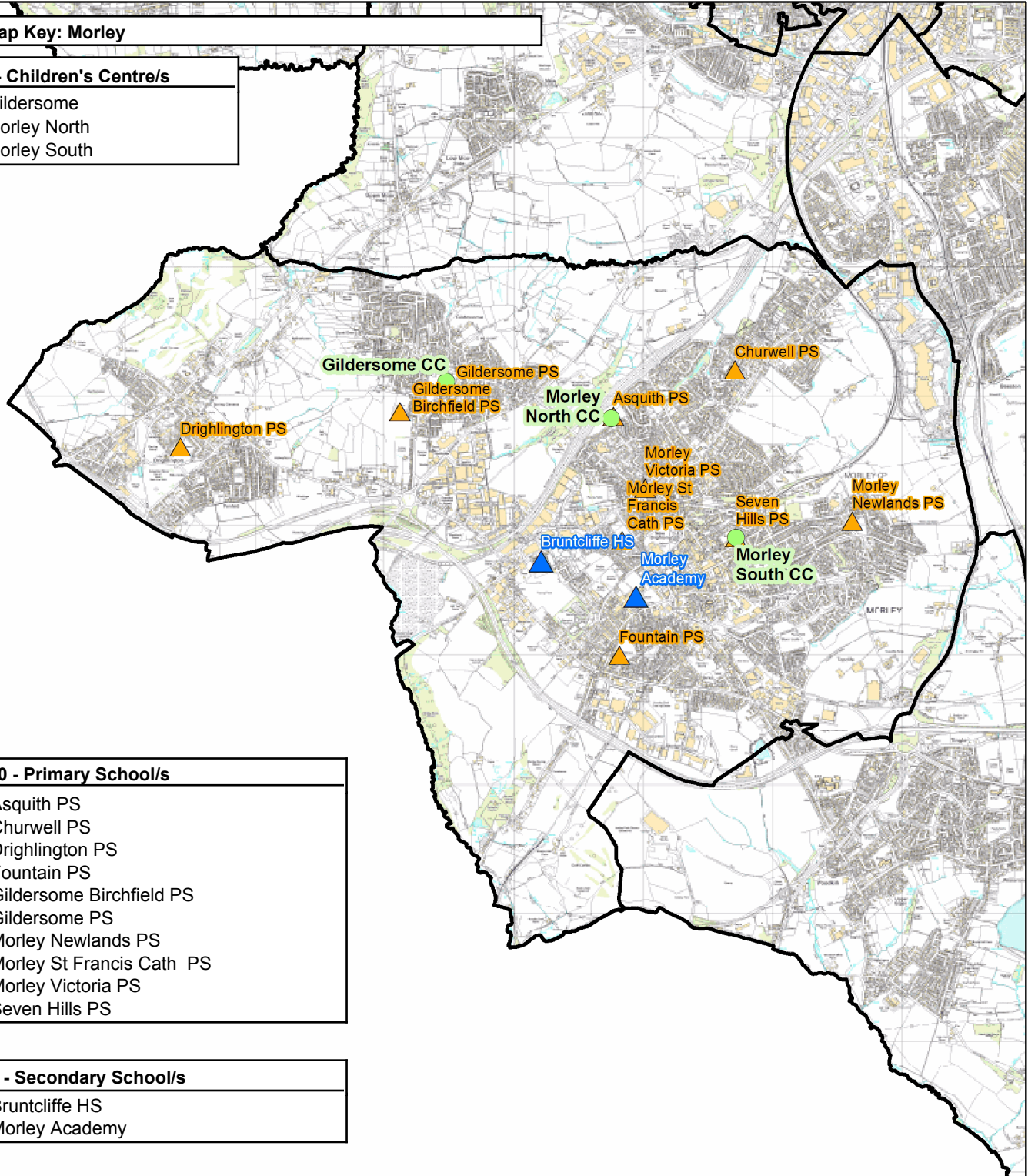
Gildersome
Morley North
Morley South

10 - Primary School/s

Asquith PS
Churwell PS
Drighlington PS
Fountain PS
Gildersome Birchfield PS
Gildersome PS
Morley Newlands PS
Morley St Francis Cath PS
Morley Victoria PS
Seven Hills PS

2 - Secondary School/s

Bruntcliffe HS
Morley Academy



Cluster Overviews key**Data Period:**

The codes in the key to the right are for the time periods that the data in these reports cover. They will appear next to all data sets.

Academic Year
Calendar Year
Financial Year
Snapshot
Other

DP:A
DP:C
DP:F
DP:S
DP:O

Cluster Overview

Data Source: January School Census					DP: S	Data Source: January School Census					DP: S
Primary Schools		DFE	Total Number on roll			Secondary Schools		DFE	Total Number on roll		
			2010	2011	2012				2010	2011	2012
Asquith Primary School	2512	250	253	255	Morley Academy	4101	1555	1589	1566		
Churwell Primary School	2286	462	481	488	Bruntcliffe High School	4109	1494	1482	1432		
Drighlington Primary School	3921	431	430	436	Total		3049	3071	2998		
Fountain Primary School	3926	432	425	444							
Gildersome Birchfield Primary School	2369	263	266	260							
Gildersome Primary School	2336	189	182	212							
Morley Newlands Primary School	2321	426	429	422							
Morley Victoria Primary School	2382	484	477	490							
Seven Hills Primary School	2293	401	399	442							
St Francis Catholic PS Morley	3362	111	131	140							
Total		3449	3473	3589							

Data Source: Children's Services - Feb 2012		DP: S
Children's Centre reach area registration for families of children aged 0-5		% Registered
Cluster		58.60
Wedge		61.66
Leeds all		60.23

Data Source: Children's Services	
Children's Centre	Ofsted ID
Gildersome	
Morley North	
Morley South	107824

Data Source: The office of National Statistics population mid-year estimates										DP: S
Population Estimates	0-15			Working Age			60/65+			
	2008	2009	2010	2008	2009	2010	2008	2009	2010	
Cluster	7174	7263	7293	27897	28006	28384	7275	7463	7696	
Wedge	47897	48099	48486	176361	180282	184227	45628	46348	47187	
Leeds all	132741	133396	134493	516578	522769	531036	129937	131536	133240	

Data Source: NHS Leeds													DP: S
Under Fives	September 2010						September 2011						
	0-1	1-2	2-3	3-4	4-5	Total	0-1	1-2	2-3	3-4	4-5	Total	
Cluster	564	555	536	487	477	2619	544	553	571	524	482	2674	
Wedge	3707	3509	3422	3243	3351	17232	3579	3695	3530	3416	3275	17495	
Leeds all	10202	9848	9478	9195	9113	47836	9996	10173	9787	9438	9319	48713	

Data Source: January School Census													DP: S
Percentage of pupils who are:	Black and Minority Ethnic			English as an Additional Language			Free School Meal Eligible			Special Education Needs			
	2010	2011	2012	2010	2011	2012	2010	2011	2012	2010	2011	2012	
Primary													
Cluster school	6.6	7.0	9.0	1.9	2.1	2.6	12.6	14.2	14.4	10.6	10.9	11.2	
Cluster residence	7.0	7.2	9.4	2.1	2.2	2.7	11.9	13.3	13.8	11.1	11.1	11.3	
Wedge school	13.1	14.1	16.1	8.8	9.5	10.2	21.4	22.2	22.2	19.0	18.6	18.2	
Total primary	23.6	24.8	26.4	15.8	16.5	17.1	21.5	22.2	22.0	17.8	17.8	17.4	
Secondary													
Cluster school	6.1	5.9	6.5	2.2	2.4	2.4	14.2	14.7	14.9	16.2	13.2	10.8	
Cluster residence	5.1	5.3	5.5	1.1	1.2	1.2	11.1	11.9	11.4	12.7	11.1	9.7	
Wedge school	7.5	8.1	9.0	4.3	4.8	5.5	19.1	19.2	19.1	22.0	19.3	21.4	
Total secondary	18.6	19.4	20.4	10.4	10.0	11.1	19.0	19.4	19.5	21.4	20.4	19.0	
Leeds all	21.4	22.5	23.9	13.4	13.7	14.6	20.6	21.1	21.1	20.0	19.6	18.7	

Data Source: HM Revenue and Customs - taken on 31st August 2007-2009										DP: S
Child Poverty	Number of children (under 16) in families in receipt of CTC or IS/JSA			Number of children (all ages) in families in receipt of CTC or IS/JSA			Number of children in poverty, by age of youngest child, 2009			
	2007	2008	2009	2007	2008	2009	0-4	5-10	11-15	16-19
Cluster	935	935	1020	1060	1070	1160	615	275	195	75
Wedge	10885	10860	11645	12055	12130	13000	7265	3380	1805	550
Leeds all	30235	29700	31030	33690	33300	34965	18720	9640	5115	1490

Data Source: Children's Services - Summer Term 2011					DP: S
Nursery Education Grant Claims	Number of eligible children	Number of: Claims by childcare setting		Resident Claims	Non Resident Claims
Cluster	786	686		590	97
Leeds all	14500	13851		9704	4148

Data Source: January School Census and 2010 Index of Multiple Deprivation										DP: S
IMD	% of pupils resident in most deprived areas	3% most deprived			10% most deprived			20% most deprived		
		10	11	12	10	11	12	10	11	12
Primary										
Cluster school		0.3	0.2	0.3	2.4	2.4	2.2	2.7	11.9	12.0
Cluster residence		0.0	0.0	0.0	0.0	0.0	0.0	0.0	9.0	9.3
Wedge school		7.7	8.1	7.9	26.4	25.6	26.0	32.3	34.4	34.8
Total primary		8.2	8.4	8.3	28.1	27.1	27.3	36.6	37.6	38.0
Secondary										
Cluster school		3.9	3.4	3.7	11.6	10.8	11.1	12.6	17.9	18.1
Cluster residence		0.0	0.0	0.0	0.0	0.0	0.0	0.0	7.2	6.7
Wedge school		6.5	7.7	7.8	22.6	22.4	22.8	27.9	30.4	30.7
Total secondary		7.0	7.5	7.6	24.0	23.5	23.8	32.3	33.5	33.6
Leeds all		7.7	8.0	8.0	26.4	25.7	25.9	34.8	35.9	36.2

Data Source: January School Census and CACI ACORN											DP: S
KEY: Wealthier Achievers(WA), Urban Prosperity (UP), Comfortably Off (CO), Moderate Means (MM), Hard Pressed (HP)											
Percentage of pupils in each ACORN category	2011					2012					
	WA	UP	CO	MM	HP	WA	UP	CO	MM	HP	
Primary											
Cluster school	17.4	1.3	37.3	18.3	24.6	16.6	1.8	37.9	18.8	23.9	
Cluster residence	17.6	1.3	38.7	18.8	23.4	16.8	1.8	38.6	19.5	23.0	
Wedge school	12.5	1.1	31.1	17.7	36.9	12.2	1.3	30.7	17.9	37.3	
Total primary	15.4	5.9	27.8	15.8	34.3	15.0	6.0	27.7	15.9	34.6	
Secondary											
Cluster school	14.5	0.9	35.8	19.4	28.7	15.0	1.0	35.2	18.6	29.1	
Cluster residence	18.5	1.0	38.5	19.1	22.8	19.4	0.9	38.5	18.4	22.8	
Wedge school	14.4	0.8	32.9	16.0	35.3	13.9	0.8	32.9	16.0	35.6	
Total secondary	17.1	5.2	29.7	14.7	32.5	16.9	5.3	29.8	14.7	32.6	
Leeds all	16.1	5.6	28.5	15.4	33.6	15.8	5.7	28.5	15.4	33.8	

Data Source: DWP information Directorate												DP: F
KEY: Job Seekers Allowance (JSA), Incapacity Benefit (IB), Lone Parent Benefit (LPB), Total Out of Work (TOW)												
Unemployment Percentage of working age people in receipt of:	2009				2010				2011			
	JSA	IB	LPB	TOW	JSA	IB	LPB	TOW	JSA	IB	LPB	TOW
Cluster	3.5	5.3	1.2	10.4	3.1	5.3	1.3	10.0	3.2	5.2	1.1	10.0
Wedge	4.8	6.6	2.0	13.9	4.5	6.4	1.9	13.4	4.5	6.4	1.7	13.2
Leeds all	4.4	5.9	1.8	12.6	4.3	5.8	1.7	12.3	4.2	5.8	1.5	12.1

Data Source: AXCIOM Lifestyle Survey 2009-2011											DP: S								
Property type by %										Length of residence by %									
Owned			Rented - Council			Rented - Private			Less than 1 year			2-5 years			More than 5 years				
09	10	11	09	10	11	09	10	11	09	10	11	09	10	11	09	10	11		
Cluster	73.2	72.9	21.3	15.4	15.1	78.4	11.4	12.1	0.0	5.6	4.8	3.9	22.4	22.7	19.5	72.0	72.6	76.6	
Wedge	62.1	62.3	39.5	25.0	24.7	53.4	12.9	13.0	0.0	8.0	6.3	4.7	20.9	20.9	19.4	71.1	72.8	75.9	
Leeds all	61.5	61.6	39.0	24.0	23.9	61.2	14.5	14.6	0.0	7.9	8.1	5.1	20.3	20.0	18.5	71.9	71.9	76.4	

Income by %	<10k			10-20k			20-30k			30-40k			40-50k			50k+		
	09	10	11	09	10	11	09	10	11	09	10	11	09	10	11	09	10	11
Cluster	16	14	12	18	17	19	18	15	19	17	18	17	17	19	12	15	18	20
Wedge	20	19	17	21	20	23	17	15	17	16	19	16	13	14	13	13	14	13
Leeds all	20	18	18	21	20	23	16	15	16	15	18	17	14	13	13	14	16	14

Struggling with payments by %										Food			Bills			Mortgage		
										09	10	11	09	10	11	09	10	11
Cluster										17.9	6.4	4.6	16.7	10.7	6.3	3.5	2.4	2.6
Wedge										17.1	9.9	6.4	16.3	11.8	8.4	2.5	2.5	1.8
Leeds all										15.9	10.8	6.4	16.3	13.0	8.3	2.2	2.2	1.7

Being Healthy

Data Source: NHS Leeds										DP: Various - Listed with each report								
Birth Data					3 year rolling average of births below 2.5kg					Number and rate of conceptions per 1000 15-17 year olds								
DP: C					% low birth weight babies					DP: O			Number			Rate		
					2006-08	2007-09	2008-10	June to May	2008-09	2009-10	2008-09	2009-10	2008-09	2009-10				
Cluster					6.1	6.8	6.4	Cluster	62	52	44	38						
Wedge					7.7	7.7	7.6	Wedge	472	459	48	48						
Leeds all					7.8	7.8	7.6	Leeds all	1220	1145	45	43						

DP: C				% of women receiving a health and social care needs assessment at 12 weeks as a percentage of live births in the same year			DP: F		% Initiating breastfeeding April to March		% breastfeeding at 6 weeks April to March	
				2009	2010	2011	2009-10	2010-11	2009-10	2010-11		
Cluster				80.7	83.3	88.9	64.4	64.6	32.6	36.2		
Wedge				82.4	82.7	84.9	62.1	59.8	34.9	34.7		
Leeds all				81.6	82.9	84.0	67.6	65.1	40.4	39.3		

DP: C				Number of emergency admissions by age group 2007-11			Number of emergency admissions to hospital for injury, poisoning and certain other consequences of external causes by age group					
				0-4	5-10	11-18	0-4	5-10	11-18			
Cluster				1513	454	792	169	141	270			
Wedge				10977	3008	6552	1278	922	2455			
Leeds all				29793	8247	18194	3419	2522	6711			

Immunisation Data							% of 2 year olds receiving vaccinations in quarter 3 for:						% of 5 year olds receiving vaccinations in quarter 3 for:					
DP: F							Diphtheria			MMR			Diphtheria			MMR		
							09-10	10-11	11-12	09-10	10-11	11-12	09-10	10-11	11-12	09-10	10-11	11-12
Cluster							99	99	98	90	91	95	96	97	99	90	96	98
Wedge							96	96	98	84	86	95	97	96	97	91	93	97
Leeds all							96	96	97	86	88	94	95	94	96	91	91	95

Data Source: National Child Measurement Programme												DP: A											
Obesity												Obesity in Reception			Obesity in Year 6								
												% Obese			% Obese or overweight			% Obese			% Obese or overweight		
												08-09	09-10	10-11	08-09	09-10	10-11	08-09	09-10	10-11	08-09	09-10	10-11
Cluster												8.5	9.4	8.7	19.8	22.7	23.8	18.9	18.3	17.9	33.3	33.6	34.4
Wedge												9.0	10.2	9.6	20.8	23.4	23.9	20.1	20.0	20.6	34.7	35.0	34.8
Leeds all												9.4	10.2	9.7	21.7	23.7	23.4	20.3	20.7	20.0	34.3	35.1	34.3

Obesity												Obesity in Reception			Obesity in Year 6					
												3 year average 2008-2011			% Obese			% Obese or overweight		
												8.88		22.19	18.41		33.71			
Cluster												8.88		22.19	18.41		33.71			
Wedge												9.61		22.74	20.24		34.83			
Leeds all												9.77		22.96	20.32		34.56			

Stay Safe

Data Source: Children's Services					DP: Various - Listed with each report						
Number of LAC and Child protection plans	The number of children and young people looked after by the Local Authority - March						The number of children with child protection plans - March				
	based on home address before coming into care			based on placement address					DP: S		
	DP: S	2011	2012	2012	2011	2012	2011	2012			
Cluster		37	39	34		21	28				
Wedge		0	505	442		0	367				
Leeds all		1439	1454	1454		947	1019				
Number of Common Assessments (CAFs)				Social Care			Social Care Referrals			Requests for Service	
DP: C	2008	2009	2010	2011	DP:A	2009	2010	2011	DP:S	Feb 11 - Jan 12	
Cluster	12	22	32	33	Cluster	529	514	536		1195	
Wedge	128	234	410	313	Wedge	5505	5001	5218		11184	
Leeds all	457	849	1115	892	Leeds all	14248	13784	14000		30539	
Number of Child and Adolescent Mental Health Services referrals											
DP: S	aged 11 and under				aged 12-18				total referrals		
September-October	2009-10		2010-11		2009-10		2010-11		2009-10 2010-11		
Cluster			102 54		143 76		245 130				
Wedge			649 421		973 555		1622 976				
Leeds all			1767 1124		2976 1730		4743 2854				

Make a positive Contribution

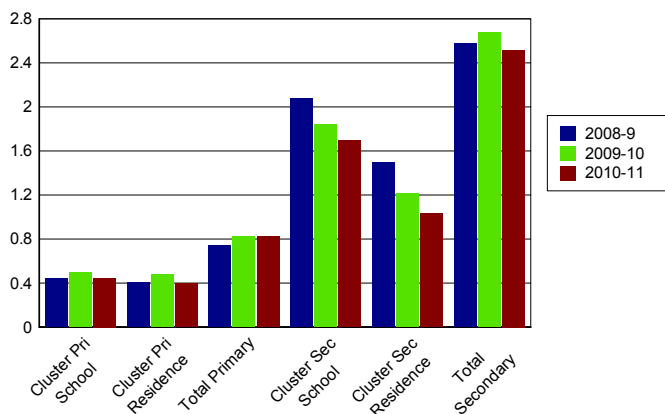
Data Source: West Yorkshire Police										DP: C
Property Crime Number of recorded crimes for:	Burglary dwelling		Burglary elsewhere		Criminal damage		Robbery		Vehicle crime	
	10	11	10	11	10	11	10	11	10	11
	Cluster	338	243	319	210	486	346	21	26	391
Wedge	2555	1992	2378	2038	5038	3731	415	301	3140	2801
Leeds all	9508	8487	5681	5408	13599	10426	1297	1226	9168	7971
Personal Crime Number of recorded crimes for:					Drug Offences		Theft from person		Violent crime	
					10	11	10	11	10	11
	Cluster					26	93	82	80	446
Wedge					563	1049	1382	2023	5322	5047
Leeds all					1248	3192	2235	3034	11233	10896
Domestic Violence Incidents	Number of incidents recorded with a domestic qualifier or disposition code on the Storm WYP incident recording system - 2011									
Cluster	588									
Wedge	5227									
Leeds all	14525									

Data Source: Youth Offending Service									DP: A	
Youth Offending	Number of Offenders					Number of Offences				
	07-08	08-09	09-10	10-11	07-08	08-09	09-10	10-11		
Cluster	74	54	37	41	144	112	83	78		
Wedge	818	610	484	500	1943	1418	946	913		
Leeds all	2741	2166	1522	1511	6331	4883	3134	3150		
April 2010 - March 2011 Number of offences by young offenders										
	Burglary	Breaches	Criminal Damage	Drugs Offences	Motoring and Vehicle	Other	Public Order	Theft and handling	Violence against the person	
Cluster	5	SUPP	7	5	6	8	6	22	18	
Wedge	81	80	91	59	53	104	86	188	171	
Leeds all	291	270	328	204	218	358	282	612	587	

Data Source: School Census												DP: A
Attendance and persistent absence by percentage	Attendance			Authorised Absence			Unauthorised Absence			Persistent Absence 15%		
	08-09	09-10	10-11	08-09	09-10	10-11	08-09	09-10	10-11	08-09	09-10	10-11
Primary												
Cluster school	95	95	95	5	5	4	0.4	0.5	0.4	4.4	4.8	4.0
Cluster residence	95	95	96	5	5	4	0.4	0.5	0.4	4.1	4.2	3.3
Total primary	94	94	95	5	5	4	0.7	0.8	0.8	5.9	5.5	4.3
Secondary												
Cluster school	92	93	94	6	6	5	2.1	1.8	1.7	12.3	10.1	9.2
Cluster residence	93	94	94	5	5	5	1.5	1.2	1.0	10.3	8.2	7.1
Total secondary	92	92	92	6	6	5	2.6	2.7	2.5	13.0	13.1	11.2

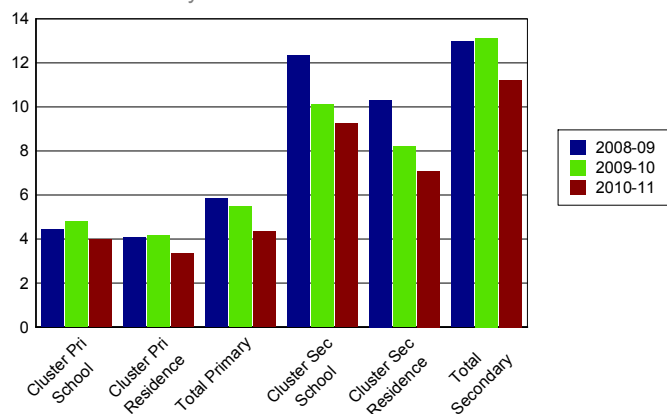
% Unauthorised Absence

2008-2011



% Persistent Absence

by 15% measure 2008-2011



Data Source: Children's Services												DP: A
Exclusions	Fixed Term Exclusions						Permanent Exclusions					
	Number			Rate per thousand			Number			Rate per thousand		
Primary	08-09	09-10	10-11	08-09	09-10	10-11	08-09	09-10	10-11	08-09	09-10	10-11
Cluster school	31	29	39	9.0	8.4	11.2	0	0	0	0.0	0.0	0.0
Cluster residence	34	29	39	9.5	8.1	10.9	0	0	0	0.0	0.0	0.0
Total primary	467	371	455	7.7	6.0	7.3	2	2	2	0.0	0.0	0.0
Secondary												
Cluster school	138	139	129	45.2	45.6	42.0	0	2	0	0.0	0.7	0.0
Cluster residence	101	99	75	48.2	46.6	35.4	1	0	0	0.5	0.0	0.0
Total secondary	4350	4286	3806	93.6	93.1	83.2	52	57	44	1.1	1.2	1.0

Enjoy and Achieve

Data Source: Keypas and DFE performance tables

DP: A

Foundation Stage Profile Data The percentage of pupils achieving a good level of development (78+ points overall and 6+ points in all PSE and CCL strands)

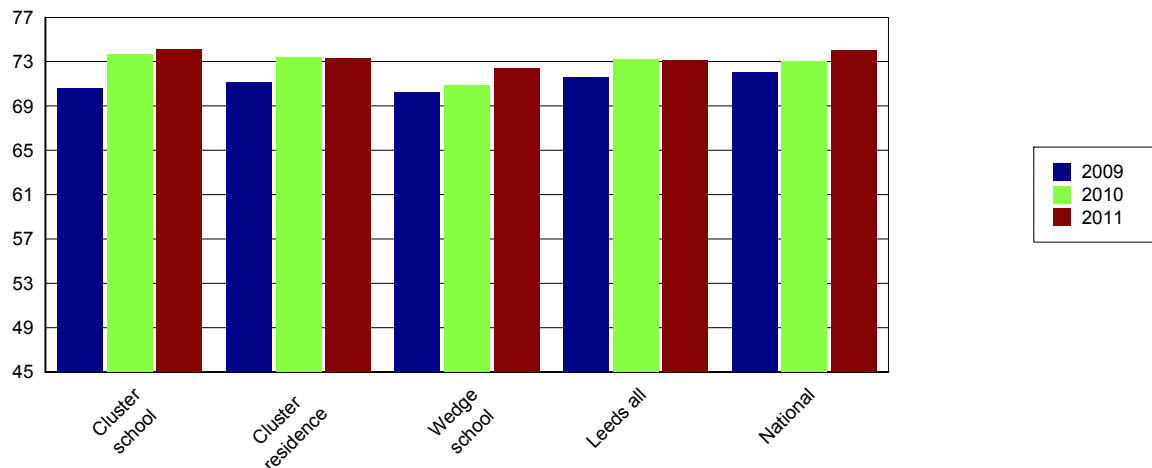
	2008	2009	2010	2011
Cluster school	57	59	56	63
Cluster residence	57	59	58	65
Leeds all	47	51	53	58

KS2 Data DP: A	English 4+			English 5+			Maths 4+			Maths 5+			English & Maths 4+		
	09	10	11	09	10	11	09	10	11	09	10	11	09	10	11
Cluster school	78	81	83	22	28	28	76	79	78	35	32	31	71	74	74
Cluster residence	78	81	82	22	25	28	76	79	77	34	30	32	71	73	73
Wedge school	78	78	81	23	27	27	76	77	78	30	29	28	70	71	72
Leeds all	79	79	81	28	31	32	77	79	78	33	31	32	72	73	73
National	80	80	82	29	33	29	79	79	80	35	34	35	72	73	74

KS2 Data - Expected progress	Made 2 levels of progress in English		Made 2 levels of progress in Maths	
	Number of pupils	Percentage	Number of pupils	Percentage
Cluster school	344	86.9	338	85.4
Wedge school	2294	88.4	2190	84.4
Leeds all	6334	88.6	6087	85.0
National		84.0		83.0

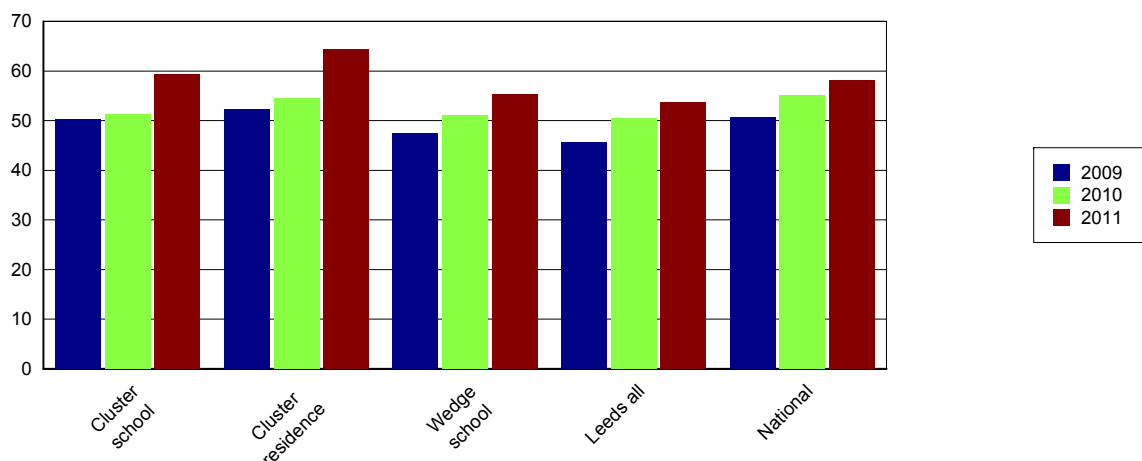
Percentage of English and Maths

Level 4+



Data Source: EPAS and DFE performance tables												DP: A	
The results are for GCSE & equivalent qualifications. The calculation of achieving no qualifications includes all qualifications													
KS4 Data	% of 5+ A*-C			% of 5+ A*-C inc Eng & Maths			% English Baccalaureate	% of 5+ A*-G			% achieving no qualifications		
	09	10	11	09	10	11	11	09	10	11	09	10	11
Cluster school	73	82	88	50	51	59	7	93	95	97	2	1	
Cluster residence	72	82	86	52	54	64	9	94	96	97	1	1	2
Wedge school	68	80	85	47	51	55	9	92	95	96	1	1	1
Leeds all	67	76	82	46	51	54	13	91	94	94	2	2	1
National	70	76	81	51	55	58	15	94	95	95		1	1

Percentage 5 A*-C Including English and Maths



Achieve Economic Well Being

Key: Not in Employment, Education or Training (NEET), In Employment, Education or Training (EET), in Full time Education (FE)													
Data Source: November destination survey													DP: S
NEET/FE		Number of NEET			% NEET			Number of FE			% FE		
		2009	2010	2011	2009	2010	2011	2009	2010	2011	2009	2010	2011
Cluster school	Year 11	52	31	23	10	6	6	405	432	337	78	85	82
	Year 12	16	SUPP	5	6	SUPP	2	233	257	252	82	94	92
	Year 13	7	6	10	4	3	5	132	133	175	71	67	83
Cluster residence	Year 11	33	18	16	9	5	4	318	335	351	83	88	85
	Year 12	12	SUPP	SUPP	5	SUPP	SUPP	210	198	165	87	93	94
	Year 13	7	5	9	5	3	5	104	124	140	73	69	85
Leeds all	Year 11	646	393	357	8	5	5	6703	7194	6564	80	87	87
	Year 12	132	67	115	3	2	3	3436	3476	3550	90	93	93
	Year 13	121	135	120	5	4	4	2067	2350	2593	78	76	84

Data Source: Integrated Youth Support Service										DP: O
16-18 NEET and EET Nov 2011 to Jan 2012	NEET		EET		Not Known		Other Activity			
	Number	%	Number	%	Number	%	Number	%		
Cluster	55	5.2	1003	93.6	SUPP	SUPP	SUPP	SUPP		
Wedge	589	7.3	7284	90.7	173	2.2	21	0.3		
Leeds all	1538	7.0	20170	91.7	343	1.6	58	0.3		

Please Note: Leeds totals for 16-18 NEET will not match publicised totals as published totals include a proportion of those whose status has expired